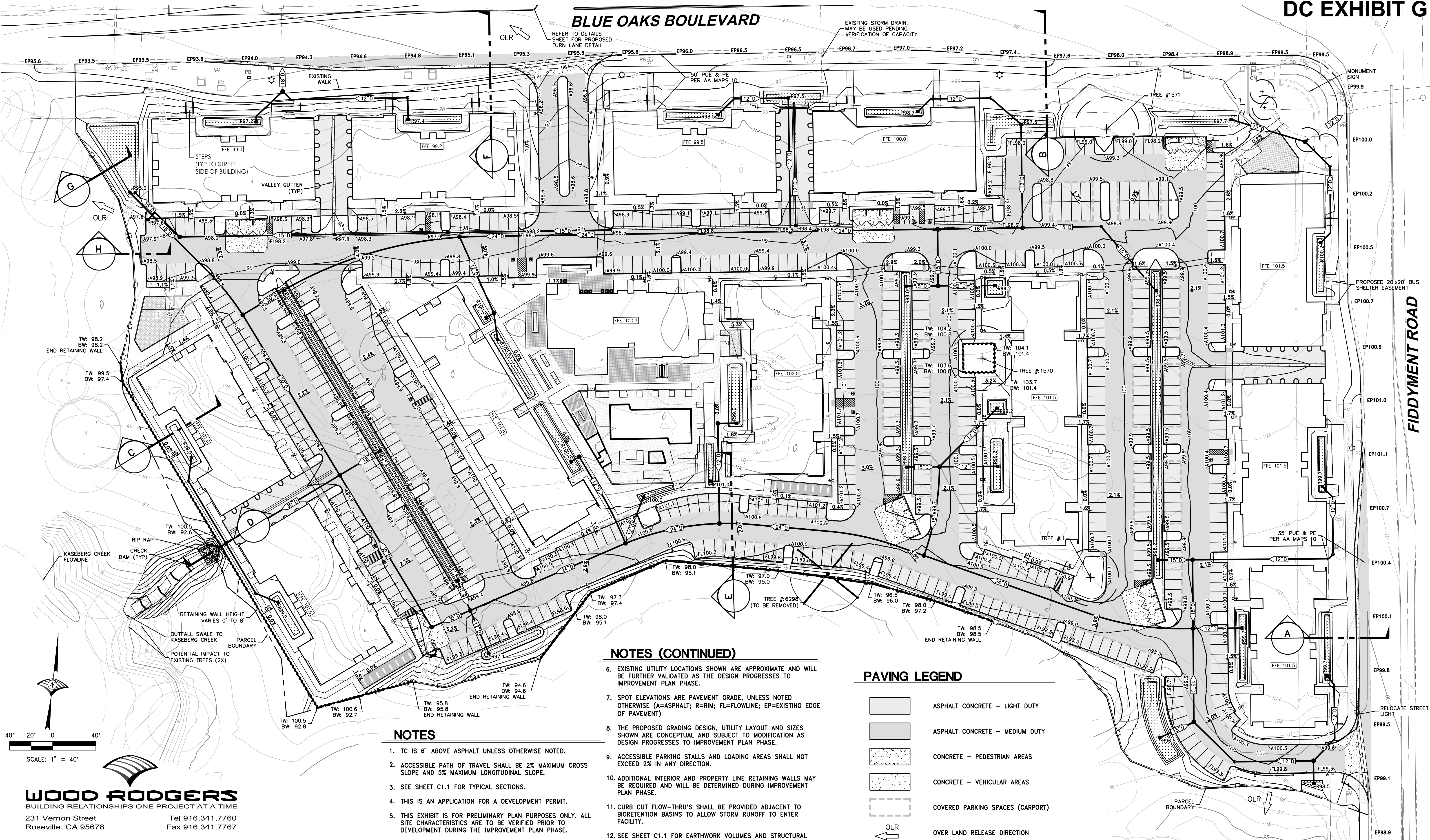


BLUE OAKS BOULEVARD



NOTES (CONTINUED)

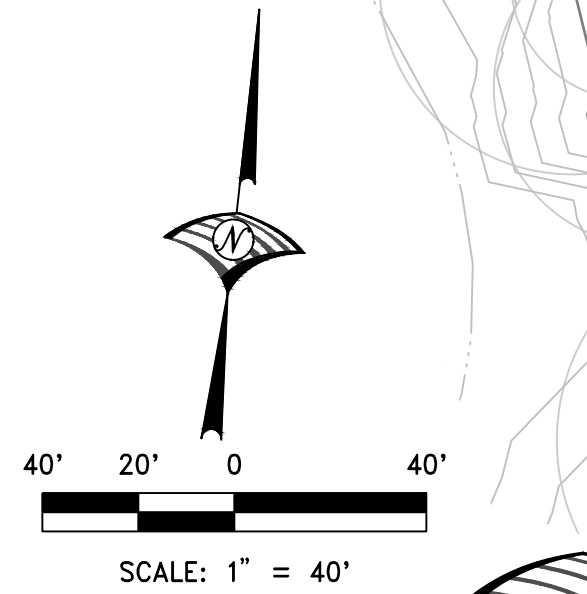
- 6. EXISTING UTILITY LOCATIONS SHOWN ARE APPROXIMATE AND WILL BE FURTHER VALIDATED AS THE DESIGN PROGRESSES TO IMPROVEMENT PLAN PHASE.
- 7. SPOT ELEVATIONS ARE PAVEMENT GRADE, UNLESS NOTED OTHERWISE (A=ASPHALT; R=RIM; FL=FLOWLINE; EP=EXISTING EDGE OF PAVEMENT)
- 8. THE PROPOSED GRADING DESIGN, UTILITY LAYOUT AND SIZES SHOWN ARE CONCEPTUAL AND SUBJECT TO MODIFICATION AS DESIGN PROGRESSES TO IMPROVEMENT PLAN PHASE.
- 9. ACCESSIBLE PARKING STALLS AND LOADING AREAS SHALL NOT EXCEED 2% IN ANY DIRECTION.
- 10. ADDITIONAL INTERIOR AND PROPERTY LINE RETAINING WALLS MAY BE REQUIRED AND WILL BE DETERMINED DURING IMPROVEMENT PLAN PHASE.
- 11. CURB CUT FLOW-THRU'S SHALL BE PROVIDED ADJACENT TO BIORETENTION BASINS TO ALLOW STORM RUNOFF TO ENTER FACILITY.
- 12. SEE SHEET C1.1 FOR EARTHWORK VOLUMES AND STRUCTURAL SECTIONS.

PAVING LEGEND

[Pattern]	ASPHALT CONCRETE - LIGHT DUTY
[Pattern]	ASPHALT CONCRETE - MEDIUM DUTY
[Pattern]	CONCRETE - PEDESTRIAN AREAS
[Pattern]	CONCRETE - VEHICULAR AREAS
[Pattern]	COVERED PARKING SPACES (CARPORT)
[Symbol]	OVER LAND RELEASE DIRECTION

NOTES

- 1. TC IS 6" ABOVE ASPHALT UNLESS OTHERWISE NOTED.
- 2. ACCESSIBLE PATH OF TRAVEL SHALL BE 2% MAXIMUM CROSS SLOPE AND 5% MAXIMUM LONGITUDINAL SLOPE.
- 3. SEE SHEET C1.1 FOR TYPICAL SECTIONS.
- 4. THIS IS AN APPLICATION FOR A DEVELOPMENT PERMIT.
- 5. THIS EXHIBIT IS FOR PRELIMINARY PLAN PURPOSES ONLY. ALL SITE CHARACTERISTICS ARE TO BE VERIFIED PRIOR TO DEVELOPMENT DURING THE IMPROVEMENT PLAN PHASE.



WOOD RODGERS
 BUILDING RELATIONSHIPS ONE PROJECT AT A TIME
 231 Vernon Street
 Roseville, CA 95678
 Tel 916.341.7760
 Fax 916.341.7767

LPAS Architecture + Design
 KF PROPERTIES

PRELIMINARY GRADING PLAN

FIDDYMENT RANCH APTS.
 PROJECT NO.1282-0003

ROSEVILLE, CA